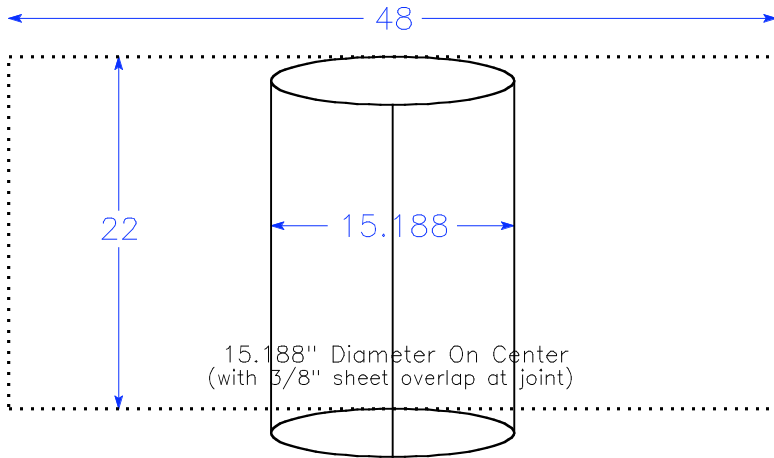
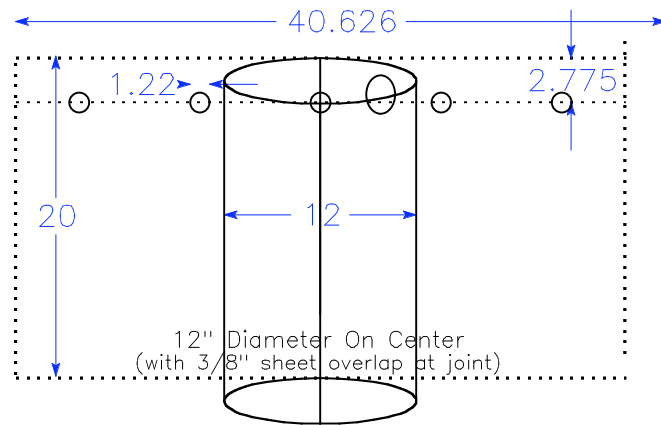


# GEK Vessel Tubes v1.0: Rolled from Flat Sheet

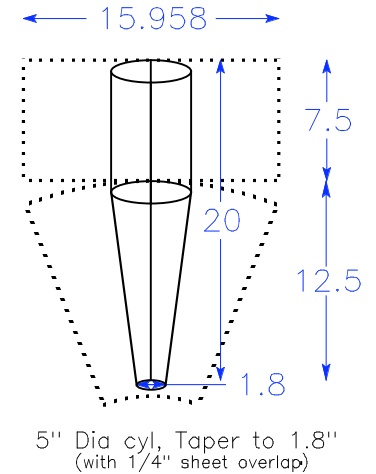
(Cut from 1/16" thick mild steel sheet)



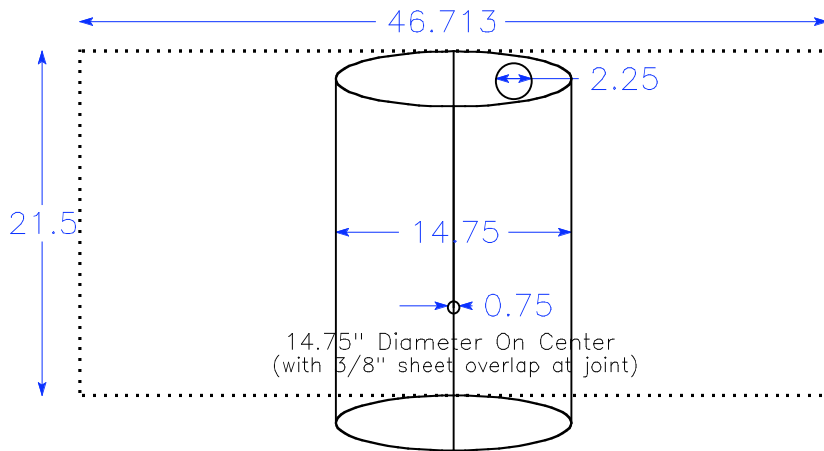
**Hopper**



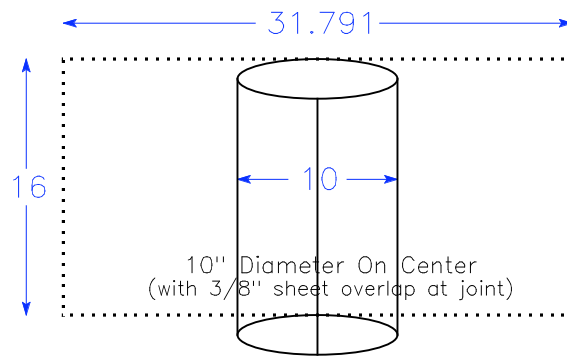
**Downdraft Reactor Outside**



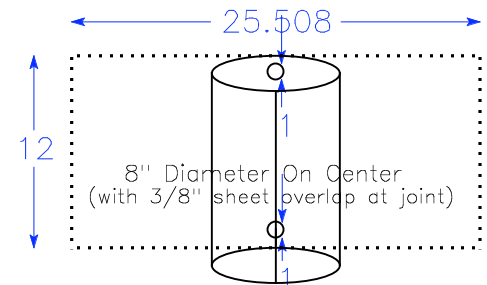
**Cyclone**



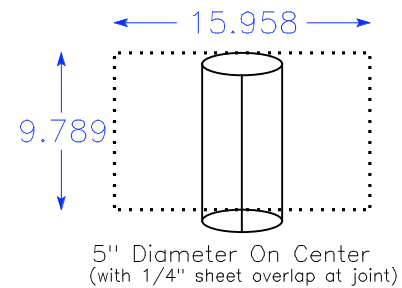
**Gas Cowling**



**Downdraft Reactor Inside/Insulation**



**Packed Bed Filter**



**Swirl Burner**

Before building, check for more recent versions at: [www.allpowerlabs.org/gasification/gek](http://www.allpowerlabs.org/gasification/gek)  
 ALL Power Labs 1010 Murray Street Berkeley, CA 94710. 8/08. jimmmason@whatiamupto.com