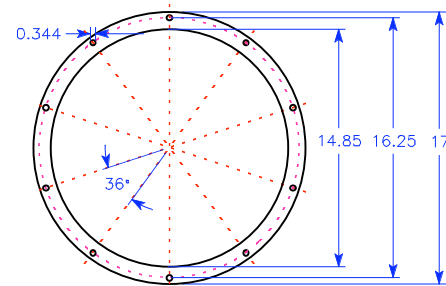


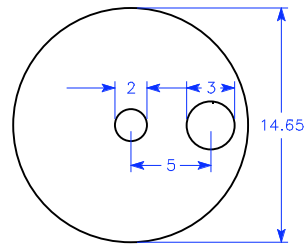
# GEK Flange Rings and End Plates v1.0

(Cut from 1/8" mild steel sheet)

## Gas Cowling

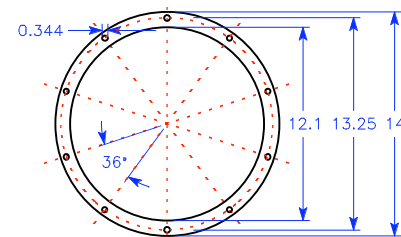


Top Rim Flange

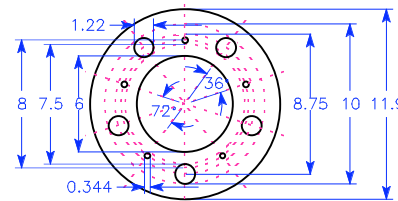


Bottom End Plate  
(with grate rotation, air inlet and ash port holes)

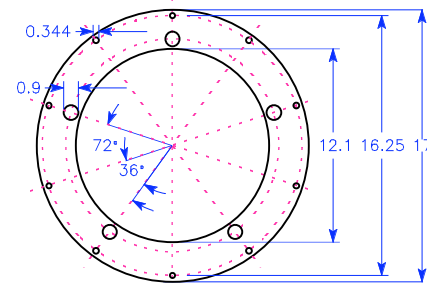
## Downdraft Reactor (nozzle & constriction type)



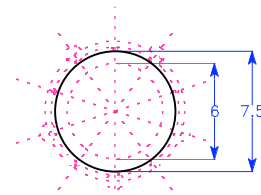
Top Rim Flange



Bottom End Plate

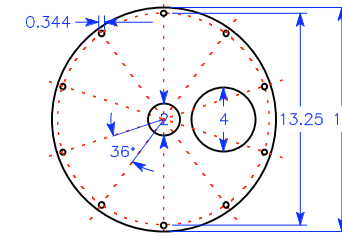


Perimeter Mounting Flange

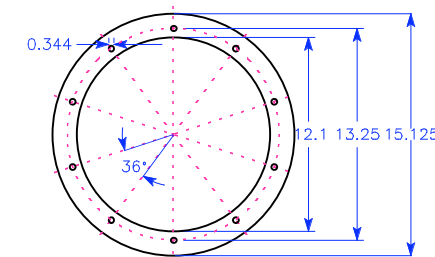


Reduction Bell End Plate  
(cut center to desired size)

## Hopper

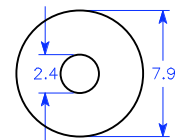
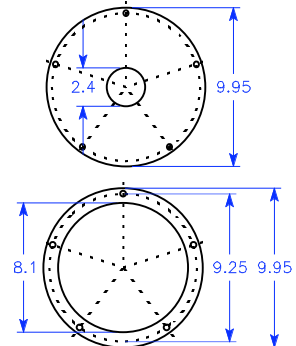


Top Cover for Reactor or Hopper  
(holes for fuel fill and top down air config)

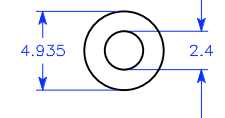


Top & Bottom Flange  
(2 count)

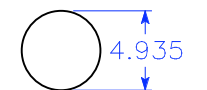
## Filter



## Cyclone



## Burner



Before building, check for more recent versions at: [www.allpowerlabs.org/gasification/gek](http://www.allpowerlabs.org/gasification/gek)  
 ALL Power Labs 1010 Murray Street Berkeley, CA 94710. 8/08. [jimmason@whatiamupto.com](mailto:jimmason@whatiamupto.com)