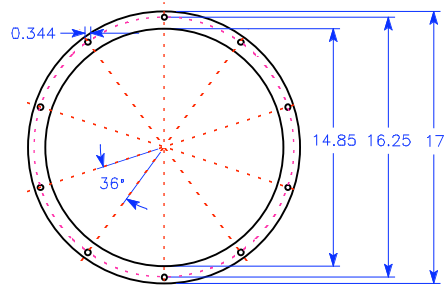


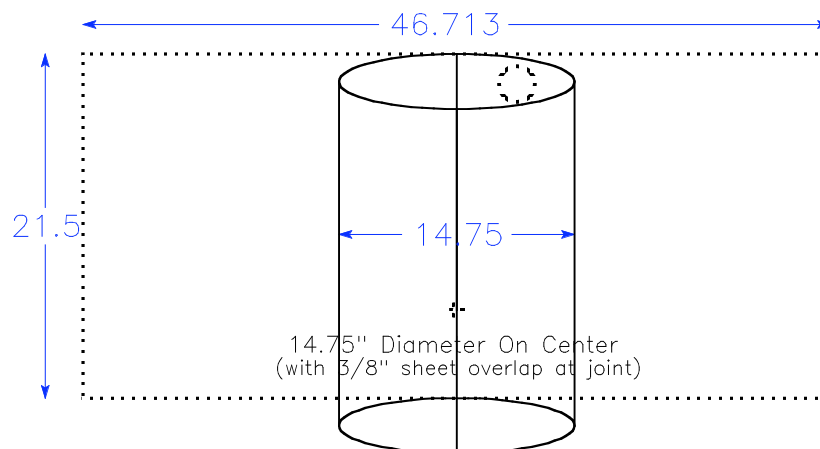
# GEK Gas Cowling v1.0

Top rim flange fits on the outside of the vessel tube  
Bottom end plate fits on the inside of the vessel tube

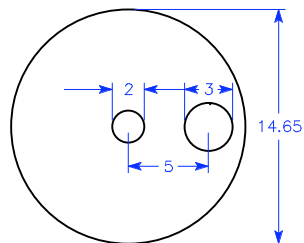
*Top Flange and Bottom End Plate are cut from 1/8" sheet steel.  
Vessel Tube is cut from 1/16" sheet steel.*



**Top Rim Flange**



**Vessel Tube**



**Bottom End Plate**  
(with grate rotation, air inlet and ash port holes)