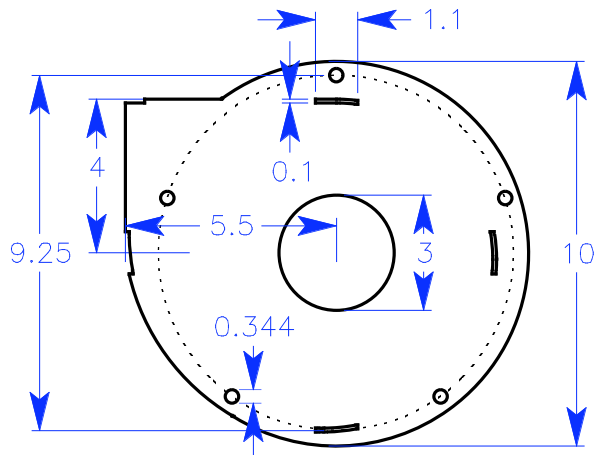


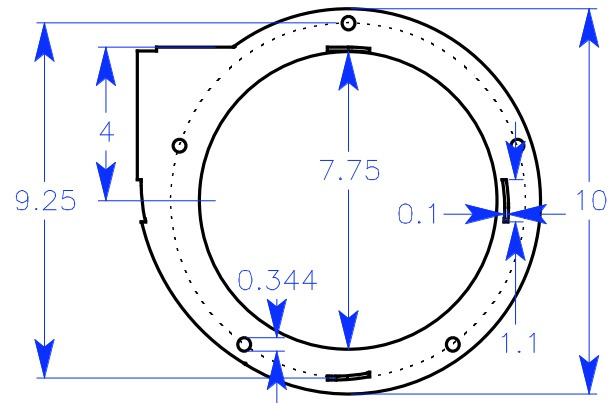
# GEK Fan Dimensions v1.02

Rotor cut from 1/8" sheet steel  
All other parts from 1/16" sheet steel

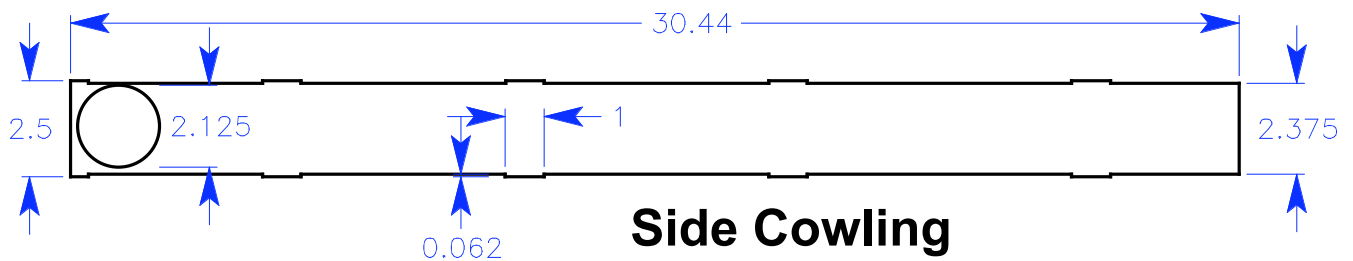
Note the asymmetry of the outlet hole in the cowling strip. Orient so that outlet hole is offset towards the bottom of the fan housing (away from the rotor). See pictures at <http://allpowerlabs.org/gasification/gek/gallery.html> for fabrication details and/or more recent versions.



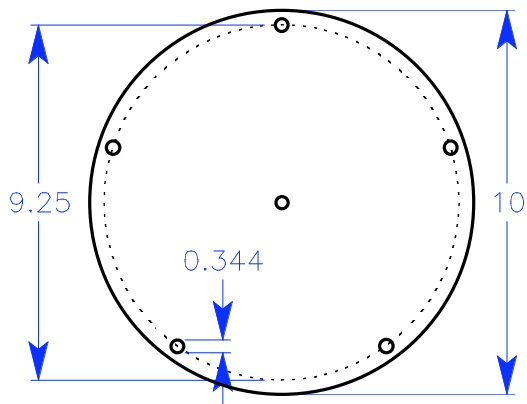
**Bottom Plate**



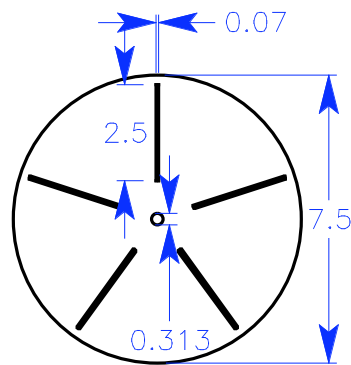
**Top Plate**



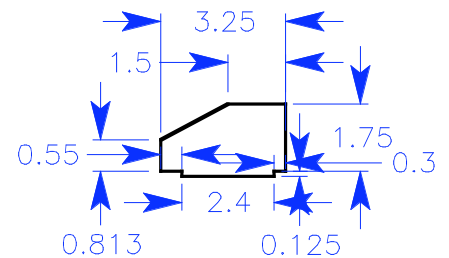
**Side Cowling**



**Rotor/Motor Plate**



**Rotor**



**Fan Blade x 5**

Before building, check for more recent versions at: [www.allpowerlabs.org/gasification/gek](http://www.allpowerlabs.org/gasification/gek)  
ALL Power Labs 1010 Murray Street Berkeley, CA 94710. 8/08. [jimmason@whatiamupto.com](mailto:jimmason@whatiamupto.com)